

# PARABATAI HI-TECH UPVC RAIN WATER GUTTER & FITTINGS



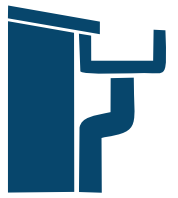
Star Bottom  
Tech

DESIGNED FOR FLOW. BUILT FOR LIFE.

 **PARABATAI**



# 6-INCH Hi-Tech Rain Water Gutter



SIZE 6 INCHES  
CAPACITY 15 LITRES PER METER

## COLOURS



WHITE



RED



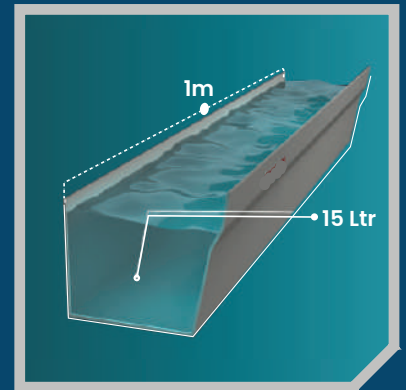
GREY



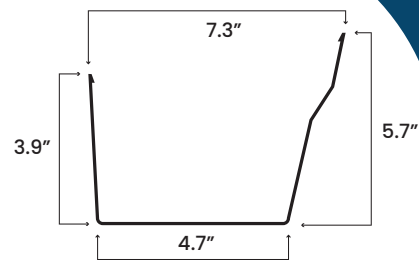
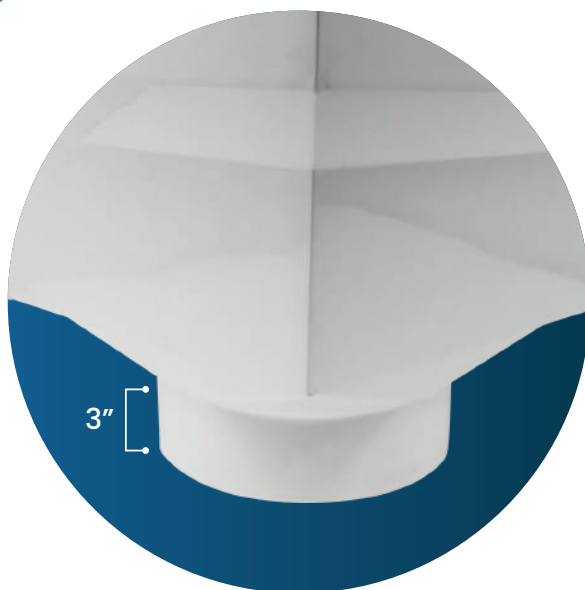
BLUE

A revolutionary product that combines form and function to serve both domestic and industrial water discharge needs.

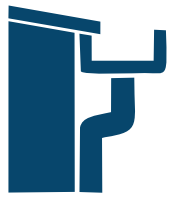
Ideal for medium-sized roofs, residential homes, villas and areas with moderate rainfall. It efficiently handles typical water flow without overflow.



**CAPACITY  
15 LTR / M**



# 9-INCH Hi-Tech Rain Water Gutter



SIZE 9 INCHES  
CAPACITY 27 LITRES PER METER

## COLOURS



WHITE



RED



GREY



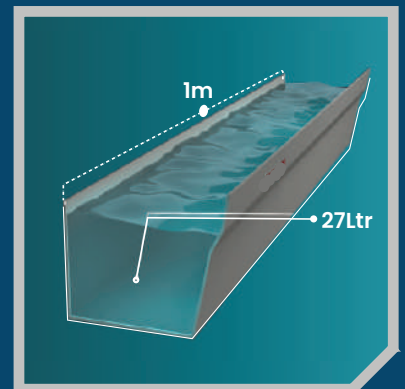
BLUE

First-in-segment with a dual outlet design.

Designed for large roof areas such as commercial buildings, or industrial sheds. It supports high-volume water discharge, especially during heavy or torrential rains.



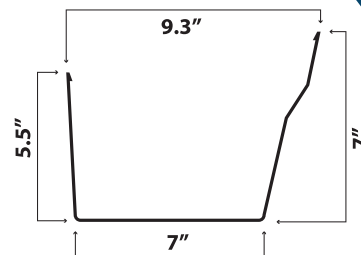
CAPACITY  
**27**  
LITERS  
PER METER



CAPACITY  
27 LTR / M

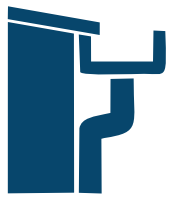


DUAL DROP





# Key Features



## 1. Heavy-Duty Build with Premium UPVC

Made using high-grade, UV-stabilized UPVC, our gutters are:

- Crack-resistant and corrosion-free
- Resistant to UV rays, harsh sunlight, and acid rain
- Designed for long-term durability in all weather conditions

## 2. Star Bottom

- The Star Bottom profile enhances water flow and reduces the chance of clogging
- Facilitates smooth, uninterrupted drainage

## 3. Leak-Proof Sealing & Snap-Lock Fitment

Smart-fit design with tight, secure joints that:

- Prevent leaks at connection points
- Ensure easy installation
- Withstand high-volume water flow under pressure

## 4. Decorative Yet Functional Aesthetic

Modern design with clean lines and a smooth finish suited for:

- Residential homes
- Commercial buildings
- Industrial sheds and farms

## 5. Rust-Free and Maintenance-Free

Built to handle the elements:

- No metal parts = no rust, ever
- Requires minimal cleaning due to its anti-clog profile
- Withstands decades of use without degradation



**Star Bottom**



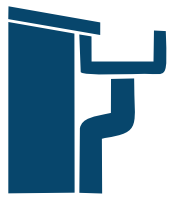
**Decoratively  
designed**



**Durable**



# Key Features



## 6. Innovative Precision-Fit Clamps

Custom-designed clamps that match the exact shape of the gutter:

- Offer better support than generic clamps
- No slippage, no sagging even in heavy rain
- Made from UV-stabilized UPVC, resistant to sun, acid rain, and temperature extremes
- Guaranteed rust-free for life

## 7. 9-Inch Model has a unique Dual Outlet Technology with Taller Front Edge

The 9-Inch Hi-Tech Rain Gutter includes a revolutionary dual outlet design with:

- One 6-inch outlet for heavy-duty discharge
- One 4-inch outlet for lighter flow
- This allows adaptive water flow management — a first in the Indian rain gutter segment. Perfect for large roofs with fluctuating water load.
- The taller front edge prevents overflow and splashback, ensuring cleaner facades

## 8. Modular Interlocking System

The entire gutter system is designed with modular, interlocking components that allow:

- Quick installation on new or existing roofs
- Easy length adjustment and corner adaptation
- Compatibility with sloped, flat, or metal-sheet roofing structures
- Perfect for phased projects or retrofitting older buildings.

## 9. Rainwater Harvesting Ready

Parabatai gutters are pre-compatible with water-saving systems, enabling:

- Easy connection to storage tanks, filters, and recharge pits
- Clean water direction into harvesting inlets
- Sustainable and eco-conscious site planning
- Ideal for residential, commercial, and government projects with green mandates.



**Rust Free**



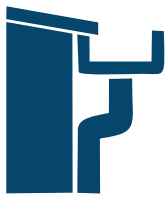
**Super Flow  
Design**



**Double  
Protection**



# Key Features



## 10. High Flow Handling Capacity

Engineered to manage high-intensity rainfall with precision. The deep and wide profile ensures:

- Quick drainage during monsoon
- No water logging or reverse flow
- Smooth performance even in storm-prone zones

## 11. Impact-Resistant Body

Manufactured using tough UPVC, the gutter body can withstand:

- Falling branches or construction debris
- Tool contact during cleaning or site work
- Sudden pressure changes during downpour
- Zero dents. Zero cracks. Long-term reliability.

## 12. Low Thermal Expansion

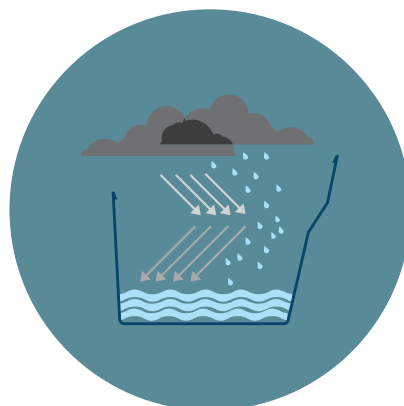
Special UPVC formulation minimizes thermal reactions, which means:

- No sagging or warping in hot summers
- No shrinking or brittleness in cold winters
- Shape retention for years, even under direct sun exposure

## 13. Weatherproof Color Stability

UV-stabilized pigments and surface treatment ensure:

- No fading, yellowing, or chalking
- Long-lasting color vibrancy
- Premium look retained for years without repainting




# 5 Reasons to install Parabatai Rain Water Gutter

- 

**Increases roof life by preventing water backflow**
- 

**Preserves landscaping and outdoor flooring**
- 

**Protects walls from seepage and mold**
- 

**Enables rainwater harvesting**
- 

**Prevents foundation damage by redirecting water**



## WHY UPVC ?

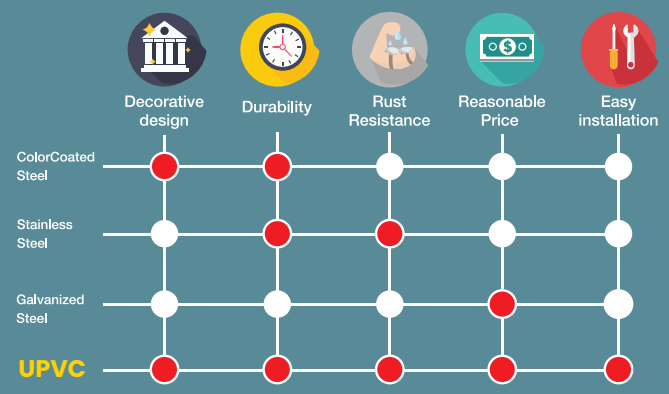
In today's market, rainwater gutters are made from various materials, but UPVC remains the most trusted and widely used – both in India and globally.

Made from a durable synthetic polymer, UPVC is:

- Stronger and longer-lasting than traditional materials
- Designed for outdoor use in all weather conditions
- 100% recyclable, making it an eco-conscious choice

UPVC offers the perfect balance of strength, sustainability, and performance, making it ideal for both residential and industrial rainwater systems.

Which are your favorite qualities in rain gutters?



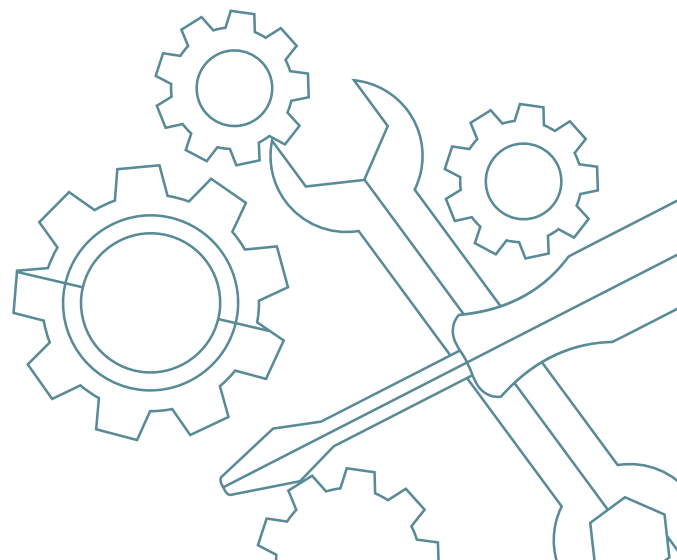
# Why

## Parabatai UPVC Rain Water Gutters ?



“ Parabatai UPVC rain gutters are aesthetically designed to enhance the look of any home. Their seamless design ensures fast water flow, while hidden clamps protect eaves and fascias with a clean finish.

Made from solid vinUPVC, they offer high strength and resist UV rays, heavy rain, and extreme weather conditions.”



# FEATURE RICH FITTINGS



## CENTRE JOINT FITTING

The Parabatai Centre Joint securely connects two gutters, preventing bending or warping at the edges. It is available in a range of colors to perfectly match the gutter system.

## ELBOW DROP OUTWARD

This fitting is used to turn the direction of the gutter outward at a 90° angle, allowing efficient water flow around corners or obstacles.



## ELBOW DROP INWARD

Used to alter the direction of gutter flow inward at a 90° angle, this fitting ensures a smooth transition without leaks or blockages.

# FEATURE RICH FITTINGS

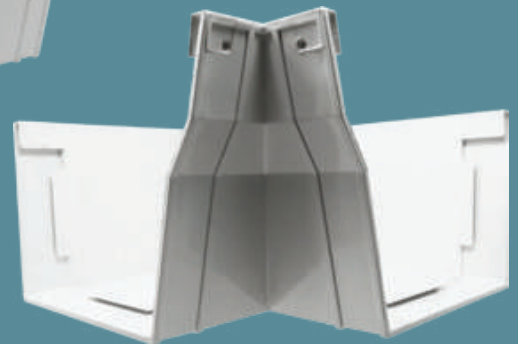
## CENTRE DROP

Also known as a Running Outlet, this fitting connects two gutters and channels water through an outlet. It ensures smooth drainage at the centre point of the system.



## ELBOW INWARD & OUTWARD

It turns water flow around the corners of the gutter flow at a 90° angle. It securely locks the gutter inside the clip to prevent flipping.



## END DROP

This fitting provides an outlet at the end of the gutter, with an outlet. It includes a stopper and a secure clip to keep the gutter edges in place.

# FEATURE RICH FITTINGS



## END CAP

Used to seal the end of the gutter, the End Cap locks the profile securely inside the clip to avoid edge flipping. Available in matching colors for a seamless finish.

## CLAMP

A critical support fitting, Parabatai offers two types of Clamps that are made to match the gutter shape and provide superior strength. Made from high-grade UGI and the other of GI + PVC, they resist UV rays, acid rain, and extreme weather.

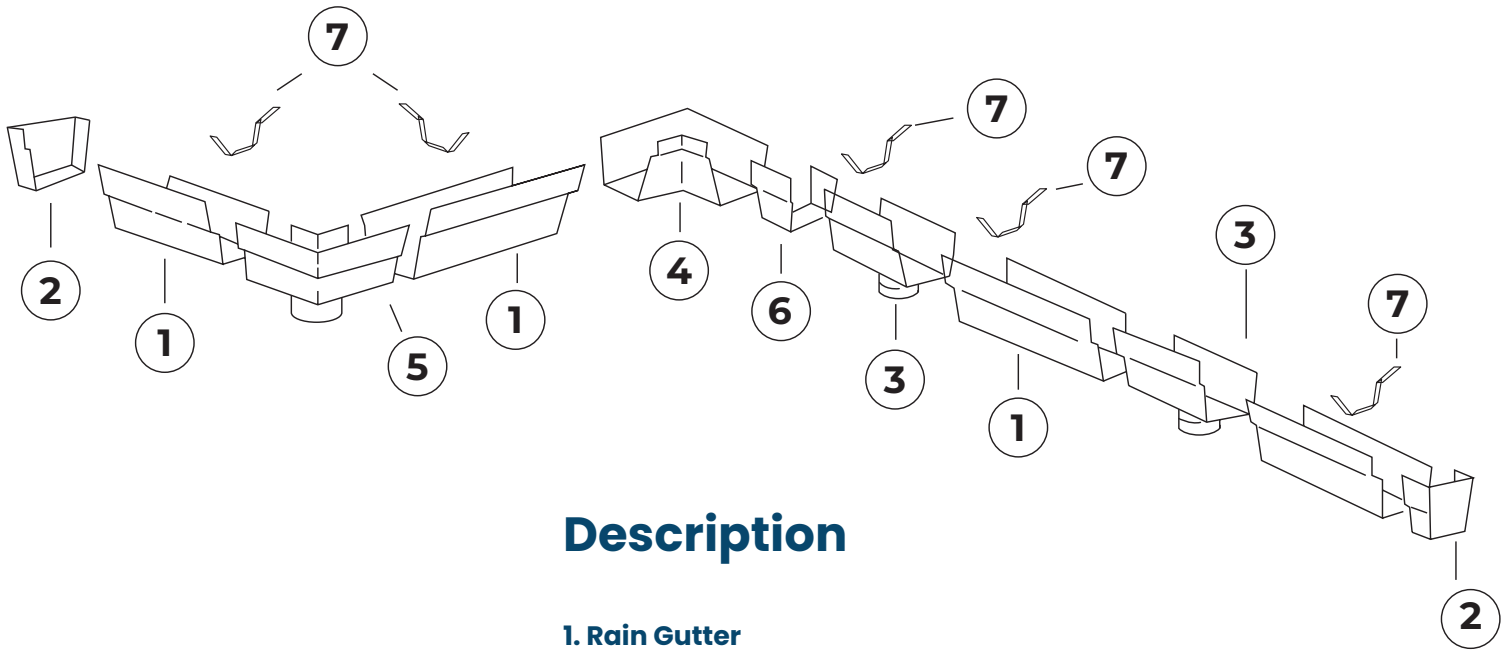


GI + PVC



GI

# Technical Guideline



## Description

- 1. Rain Gutter
- 2. End Cap (Left or Right)
- 3. Centre Drop
- 4. Elbow Inward
- 5. Elbow Outward
- 6. Centre Joint
- 7. Clamp



### CORPORATE OFFICE

PARABATAI TECHNOTECH PVT LTD  
L-7 & 8, Upper Ground Floor,  
Lane No - 7, New Mahavir Nagar,  
New Delhi - 110018

Call us today  
7835000230

Email  
sales@parabatai.in